

An ISO 9001, ISO 45001, & PED Certified Company

# FORGED & SEAMLESS STEEL PIPE FITTINGS & FLANGES



**M.S. Fittings Manufacturing Co. Pvt. Ltd**

Kolkata - India

Serving Refineries, Petrochemical & Power Projects Since 1957



# ABOUT US

*Edition: 2026  
Revision 01*

## *Seven Decades of Engineering Excellence.*

M.S. Fittings Mfg. Co, established in **May 1957** is one of India's longstanding manufacturers of industrial pipe fittings and flanges.

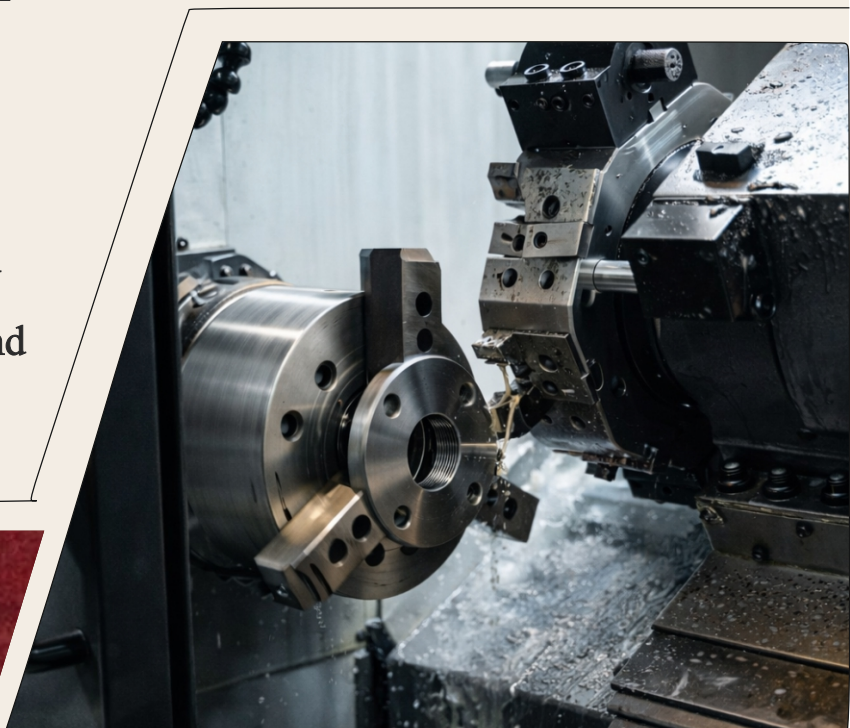
Over seven decades, the company has built a reputation for **consistent quality, engineering integrity and on-time delivery** while serving major public and private sector enterprises across India and international markets.

With fully integrated facilities including forging, forming, heat treatment, machining, and inspection, the company ensures complete control over quality and traceability.

## Our Principles

- *Maintain quality standards*
- *Customer Satisfaction*
- *Continuous improvement in technology, man power and systems*

**PRECISION MACHINING FOR  
FORGED PIPE FITTINGS & FLANGES**





# OUR JOURNEY

*Since 1957*



**1957**

## THE BEGINNING

M.S. Fittings was established in May 1957 in Kolkata with a vision to manufacture quality industrial fittings.

**1976**

## FORGING FOUNDATION

Started in house forging operations, laying the foundation for robust & reliable products.

**1980s**

## EXPANSION

Expanded facilities to enhance production capabilities.

**2000s**

## QUALITY & CERTIFICATIONS

Strengthened quality systems and received ISO 9001, ISO 45001, & PED certifications.

**2010s**

## MODERNISATION

Adopted Industry-leading manufacturing technologies to benchmark international quality standards

**2020s**

## GLOBAL REACH

Expanded presence across India and international markets, serving oil & gas, petrochemical, nuclear and power projects

**SEVEN DECADES OF QUALITY & RELIABILITY**

# INFRASTRUCTURE

Dedicated facilities. Complete in-house production control

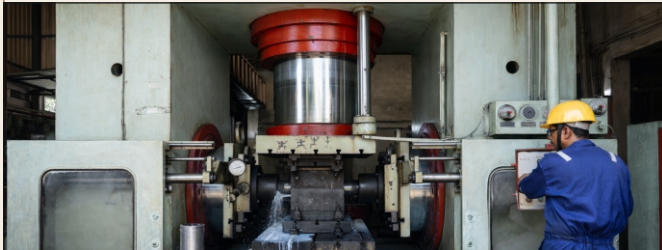


## AT WORKS



### FORGING & FORMING

Hot and cold forming facilities  
All dies designed in-house.



### HEAT TREATMENT

Controlled & calibrated furnaces for achieving uniform metallurgical properties.



### CNC MACHINING

Multi-axis precision machining for fittings & flanges  
Precision dimensional tolerances maintained.



### DISPATCH & PACKING

Marking, stamping and clamping as per client specifications.

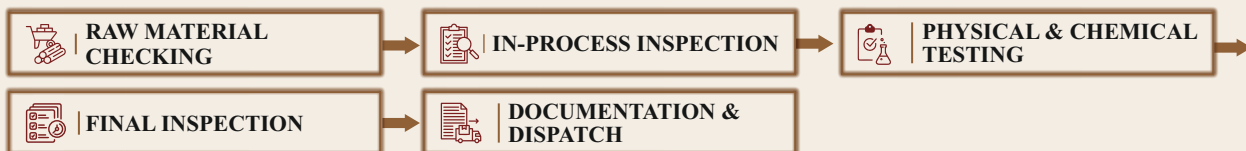


## QUALITY ASSURANCE

We ensure stringent quality control at every stage of manufacturing, from raw material procurement to final dispatch. Our systems are designed to meet international standards and client-specific requirements across critical applications.



## QUALITY CONTROL PROCESS



### TESTING

- Dimensional Inspection
- Physical & Mechanical
- PMI
- NDT ( UT/RT/DP/MPI )

### TRACEABILITY

- MTC ( EN 10204 3.1 / 3.2 )
- Inspection Reports & Mill Certificates.
- Heat Number

# MATERIAL GRADES & SPECIFICATIONS



We offer Pipe fittings & Flanges under the following grades

## CARBON STEEL

| ASTM Reference | Grades      |
|----------------|-------------|
| A234           | WPB         |
| A105           | -           |
| A106           | Gr. B       |
| A516           | Gr. 60 / 70 |

## LOW TEMP CARBON STEEL

| ASTM Reference | Grades |
|----------------|--------|
| A420           | WPL6   |
| A350           | LF2    |
| A333           | Gr. 6  |

## STAINLESS STEEL

| ASTM Reference | Grades  |
|----------------|---|
| A403           | WP304   WP304L   WP316   WP316L   WP321   WP347   WP347H   WP317L |
| A182           | F304   F304L   F316   F316L   F321   F347   F347H   F317L         |
| A312           | TP304   TP304L   TP316   TP316L   TP321   TP347   TP347H   TP317L |

## ALLOY STEEL

| ASTM Reference | Grades                         |
|----------------|--------------------------------|
| A234           | WP11   WP22   WP5   WP9   WP91 |
| A182           | F11   F22   F5   F9   F91      |
| A335           | P11   P22   P5   P9   P91      |

## SPECIAL GRADES

| ASTM Reference                         | UNS NO.                                    |
|--|--|
| INCONEL 600   690   800H   800HT   625 | N06600   N06690   N08810   N08811   N06625 |
| INCOLOY 825   020                      | N08825   N08020                            |
| HASTELLOY B2   C276   C22              | N106625   N10276   N06022                  |
| MONEL 400   K500                       | N04400   N05500                            |
| Cu-Ni 70/30   90/10                    | C71500   C70600                            |
| DUPLEX                                 | S31803   S32205                            |
| SUPER DUPLEX                           | S32750(F53)   S32760(F55)                  |

# BUTT WELD FITTINGS

*Engineered for strength, durability & leak-proof performance*



## ELBOW

45°, 90° & 180° (LR & SR)

## TEE

Equal / Reducing

## CROSS

Equal

## REDUCER / SWAGE NIPPLE

Concentric, Eccentric

## CAP

## STUB END



**Thickness : SCH 10 - SCH XXS**

**Size Range : 1/2" to 24" NB**

**Standards : ASME B16.9 | MSS SP-95 & BS: 3799**

# FORGED FITTINGS

*Socket weld & threaded fittings for high pressure applications*



## SOCKET WELD FITTINGS

- Elbows ( 45°, 90° )
- Tee & Cross
- Couplings
- Union
- Cap
- Reducing Insert
- Boss
- Couplet



## THREADED (SCREWED) FITTINGS

- Elbow
- Tee & Cross
- Union
- Cap
- Plug ( Hex & Square & Bull )
- Bushing
- Boss
- Couplet



**Pressure Class : 2000# to 9000# ( Wherever Applicable )**

**Sizes : 1/2" to 4" NB**

**Standards : ASME B16.11 / MSS SP-79**

# FLANGES

---

*Comprehensive range of high quality ASME flanges for pipe connection*



**WELDNECK**

---

**SLIPON**

---

**BLIND**

---

**SOCKET WELD**

---

**THREADED**

---

**LAP JOINT**

---

**SPECTACLE BLIND ( FIG .8 )**



---

**Pressure Class : 150# TO 2500# ( Wherever Applicable )**

---

**Sizes : 1/2" to 24" NB**

---

**Standards : ASME B16.5 / B16.47**

---

# OLETS & SPECIAL PRODUCTS



*Branch connections and other special products for diverse piping needs*

## BRANCH CONNECTIONS

- **WELDOLET<sup>®</sup>**
- **SOKOLET<sup>®</sup>**
- **THREDOLET<sup>®</sup>**
- **NIPPLE - OUTLET**
- **45° BRANCH OUTLET**  
(BW / SW / THREADED)



## SPECIAL PRODUCTS

- **NOZZLES**



**Size : 1/2" to 12" NB**

**Standards : Outlets as per MSS SP-97**

**Special products as per client drawing**

# DESIGN PROOF TESTS



**M.S.Fittings Manufacturing Co. Pvt. Ltd.**  
17 ABHEETA STREET KOLKATA-700 013

**Design Proof Test**

| Sr. No. | Size - Thickness and Type of fitting as per clause 3.1 of MSS-SP-47-2008 | Material & grade of pipe            | ISO Ratio TO THROTTLE TIMES | Type of Fitting with size range T1n. And Test qualified as per Clause 3.3.3 to 3.3.3.3 of MSS-SP-47-2008 | Remarks |
|---------|--|-------------------------------------|-----------------------------|--|---------|
| 1       | 1" NPS thru 1.315" O.D. THRU 0.1875" THK. (SCH 40)                       | ASTM A106 GR B (A53) (100% Tensile) | 40:150                      | 1" NPS THRU 1.315" O.D. WALL THICKNESS FROM 0.1875" TO 0.2031"   |         |
| 2       | 1" NPS thru 1.315" O.D. THRU 0.1875" THK. (SCH 40)                       | ASTM A106 GR B (A53) (100% Tensile) | 40:150                      | 1" NPS THRU 1.315" O.D. WALL THICKNESS FROM 0.1875" TO 0.2031"   |         |

After identification of all the items covered on this sheet, were subjected to Design Proof Test as per agreed pressure in the presence of MR. DNY Kishore on 24.02.2014 and satisfactorily without, without failure. The Computed proof test pressure defined as per Clause 3.3.4 of MSS-SP-47-2008.

*Design Proof Test successful and found no rupture or satisfactory.*

*As per 17/1/2014*

*24.02.14*

**M.S.Fittings Manufacturing Co. Pvt. Ltd.**  
17 ABHEETA STREET KOLKATA-700 013

**Design Proof Test**

| Sr. No. | Size - Thickness and Type of fitting as per clause 3.1 of MSS-SP-47-2008 | Material & grade of pipe            | ISO Ratio TO THROTTLE TIMES | Type of Fitting with size range T1n. And Test qualified as per Clause 3.3.3 to 3.3.3.3 of MSS-SP-47-2008 | Remarks |
|---------|--|-------------------------------------|-----------------------------|--|---------|
| 1       | 1" NPS thru 1.315" O.D. THRU 0.1875" THK. (SCH 40)                       | ASTM A106 GR B (A53) (100% Tensile) | 40:150                      | 1" NPS THRU 1.315" O.D. WALL THICKNESS FROM 0.1875" TO 0.2031"   |         |
| 2       | 1" NPS thru 1.315" O.D. THRU 0.1875" THK. (SCH 40)                       | ASTM A106 GR B (A53) (100% Tensile) | 40:150                      | 1" NPS THRU 1.315" O.D. WALL THICKNESS FROM 0.1875" TO 0.2031"   |         |

After identification of all the items covered on this sheet, were subjected to Design Proof Test as per agreed pressure in the presence of MR. DNY Kishore on 24.02.2014 and satisfactorily without, without failure. The Computed proof test pressure defined as per Clause 3.3.4 of MSS-SP-47-2008.

*Design Proof Test successful and found no rupture or satisfactory.*

*As per 17/1/2014*

*24.02.14*

**M. S. Fittings Manufacturing Company Private Limited**  
MANUFACTURERS OF ALL TYPES OF PIPE FITTINGS AND FLANGES  
HEAD OFFICE: 17 ABHEETA STREET, KOLKATA-700 013, INDIA. (REGD. OFFICE)  
FACTORY: 17 ABHEETA STREET, KOLKATA-700 013, INDIA. (REGD. OFFICE)  
ISO 9001:2008 CERTIFIED | ISO 14001:2004 CERTIFIED | ISO 45001:2018 CERTIFIED | ISO 10000:2005 CERTIFIED

**Design Proof Test of Fittings**  
SHEET NO. MSF/PT/2014/001  
DATE: 24.02.2014

| Sr. No. | Item Description                                   | Size | Material       | Grade | ISO Ratio | TO THROTTLE TIMES  | Remarks |
|---------|--|------|----------------|-------|-----------|--|---------|
| 1       | 1" NPS thru 1.315" O.D. THRU 0.1875" THK. (SCH 40) | 1"   | ASTM A106 GR B | (A53) | 40:150    | 1" NPS THRU 1.315" O.D. WALL THICKNESS FROM 0.1875" TO 0.2031" |         |
| 2       | 1" NPS thru 1.315" O.D. THRU 0.1875" THK. (SCH 40) | 1"   | ASTM A106 GR B | (A53) | 40:150    | 1" NPS THRU 1.315" O.D. WALL THICKNESS FROM 0.1875" TO 0.2031" |         |

Test Pressure = 224.71 MPa

*Design Proof Test successful and found no rupture or satisfactory.*

*As per 17/1/2014*

*24.02.14*

**M.S.Fittings Manufacturing Co. Pvt. Ltd.**  
17 ABHEETA STREET KOLKATA-700 013

**Design Proof Test**

| Sr. No. | Size - Thickness and Type of fitting as per clause 3.1 of MSS-SP-47-2008 | Material & grade of pipe            | ISO Ratio TO THROTTLE TIMES | Type of Fitting with size range T1n. And Test qualified as per Clause 3.3.3 to 3.3.3.3 of MSS-SP-47-2008 | Remarks |
|---------|--|-------------------------------------|-----------------------------|--|---------|
| 1       | 1" NPS thru 1.315" O.D. THRU 0.1875" THK. (SCH 40)                       | ASTM A106 GR B (A53) (100% Tensile) | 40:150                      | 1" NPS THRU 1.315" O.D. WALL THICKNESS FROM 0.1875" TO 0.2031"   |         |
| 2       | 1" NPS thru 1.315" O.D. THRU 0.1875" THK. (SCH 40)                       | ASTM A106 GR B (A53) (100% Tensile) | 40:150                      | 1" NPS THRU 1.315" O.D. WALL THICKNESS FROM 0.1875" TO 0.2031"   |         |

After identification of all the items covered on this sheet, were subjected to Design Proof Test as per agreed pressure in the presence of MR. DNY Kishore on 24.02.2014 and satisfactorily without, without failure. The Computed proof test pressure defined as per Clause 3.3.4 of MSS-SP-47-2008.

*Design Proof Test successful and found no rupture or satisfactory.*

*As per 17/1/2014*

*24.02.14*

**M.S.Fittings Manufacturing Co. Pvt. Ltd.**  
17 ABHEETA STREET KOLKATA-700 013

**Design Proof Test**

| Sr. No. | Size - Thickness and Type of fitting as per clause 3.1 of MSS-SP-47-2008 | Material & grade of pipe            | ISO Ratio TO THROTTLE TIMES | Type of Fitting with size range T1n. And Test qualified as per Clause 3.3.3 to 3.3.3.3 of MSS-SP-47-2008 | Remarks |
|---------|--|-------------------------------------|-----------------------------|--|---------|
| 1       | 1" NPS thru 1.315" O.D. THRU 0.1875" THK. (SCH 40)                       | ASTM A106 GR B (A53) (100% Tensile) | 40:150                      | 1" NPS THRU 1.315" O.D. WALL THICKNESS FROM 0.1875" TO 0.2031"   |         |
| 2       | 1" NPS thru 1.315" O.D. THRU 0.1875" THK. (SCH 40)                       | ASTM A106 GR B (A53) (100% Tensile) | 40:150                      | 1" NPS THRU 1.315" O.D. WALL THICKNESS FROM 0.1875" TO 0.2031"   |         |

After identification of all the items covered on this sheet, were subjected to Design Proof Test as per agreed pressure in the presence of MR. DNY Kishore on 24.02.2014 and satisfactorily without, without failure. The Computed proof test pressure defined as per Clause 3.3.4 of MSS-SP-47-2008.

*Design Proof Test successful and found no rupture or satisfactory.*

*As per 17/1/2014*

*24.02.14*

**M. S. Fittings Manufacturing Company Private Limited**  
MANUFACTURERS OF ALL TYPES OF PIPE FITTINGS AND FLANGES  
HEAD OFFICE: 17 ABHEETA STREET, KOLKATA-700 013, INDIA. (REGD. OFFICE)  
FACTORY: 17 ABHEETA STREET, KOLKATA-700 013, INDIA. (REGD. OFFICE)  
ISO 9001:2008 CERTIFIED | ISO 14001:2004 CERTIFIED | ISO 45001:2018 CERTIFIED | ISO 10000:2005 CERTIFIED

**Design Proof Test of Fittings**  
SHEET NO. MSF/PT/2014/002  
DATE: 24.02.2014

| Sr. No. | Item Description                                   | Size | Material       | Grade | ISO Ratio | TO THROTTLE TIMES  | Remarks |
|---------|--|------|----------------|-------|-----------|--|---------|
| 1       | 1" NPS thru 1.315" O.D. THRU 0.1875" THK. (SCH 40) | 1"   | ASTM A106 GR B | (A53) | 40:150    | 1" NPS THRU 1.315" O.D. WALL THICKNESS FROM 0.1875" TO 0.2031" |         |
| 2       | 1" NPS thru 1.315" O.D. THRU 0.1875" THK. (SCH 40) | 1"   | ASTM A106 GR B | (A53) | 40:150    | 1" NPS THRU 1.315" O.D. WALL THICKNESS FROM 0.1875" TO 0.2031" |         |

Test Pressure = 224.71 MPa

*Design Proof Test successful and found no rupture or satisfactory.*

*As per 17/1/2014*

*24.02.14*

**M. S. Fittings Manufacturing Company Private Limited**  
MANUFACTURERS OF ALL TYPES OF PIPE FITTINGS AND FLANGES  
HEAD OFFICE: 17 ABHEETA STREET, KOLKATA-700 013, INDIA. (REGD. OFFICE)  
FACTORY: 17 ABHEETA STREET, KOLKATA-700 013, INDIA. (REGD. OFFICE)  
ISO 9001:2008 CERTIFIED | ISO 14001:2004 CERTIFIED | ISO 45001:2018 CERTIFIED | ISO 10000:2005 CERTIFIED

**Design Proof Test of Fittings**  
SHEET NO. MSF/PT/2014/003  
DATE: 24.02.2014

| Sr. No. | Item Description                                   | Size | Material       | Grade | ISO Ratio | TO THROTTLE TIMES  | Remarks |
|---------|--|------|----------------|-------|-----------|--|---------|
| 1       | 1" NPS thru 1.315" O.D. THRU 0.1875" THK. (SCH 40) | 1"   | ASTM A106 GR B | (A53) | 40:150    | 1" NPS THRU 1.315" O.D. WALL THICKNESS FROM 0.1875" TO 0.2031" |         |
| 2       | 1" NPS thru 1.315" O.D. THRU 0.1875" THK. (SCH 40) | 1"   | ASTM A106 GR B | (A53) | 40:150    | 1" NPS THRU 1.315" O.D. WALL THICKNESS FROM 0.1875" TO 0.2031" |         |

Test Pressure = 224.71 MPa

*Design Proof Test successful and found no rupture or satisfactory.*

*As per 17/1/2014*

*24.02.14*

**M. S. Fittings Manufacturing Company Private Limited**  
MANUFACTURERS OF ALL TYPES OF PIPE FITTINGS AND FLANGES  
HEAD OFFICE: 17 ABHEETA STREET, KOLKATA-700 013, INDIA. (REGD. OFFICE)  
FACTORY: 17 ABHEETA STREET, KOLKATA-700 013, INDIA. (REGD. OFFICE)  
ISO 9001:2008 CERTIFIED | ISO 14001:2004 CERTIFIED | ISO 45001:2018 CERTIFIED | ISO 10000:2005 CERTIFIED

**Design Proof Test of Fittings**  
SHEET NO. MSF/PT/2014/004  
DATE: 24.02.2014

| Sr. No. | Item Description                                   | Size | Material       | Grade | ISO Ratio | TO THROTTLE TIMES  | Remarks |
|---------|--|------|----------------|-------|-----------|--|---------|
| 1       | 1" NPS thru 1.315" O.D. THRU 0.1875" THK. (SCH 40) | 1"   | ASTM A106 GR B | (A53) | 40:150    | 1" NPS THRU 1.315" O.D. WALL THICKNESS FROM 0.1875" TO 0.2031" |         |
| 2       | 1" NPS thru 1.315" O.D. THRU 0.1875" THK. (SCH 40) | 1"   | ASTM A106 GR B | (A53) | 40:150    | 1" NPS THRU 1.315" O.D. WALL THICKNESS FROM 0.1875" TO 0.2031" |         |

Test Pressure = 224.71 MPa

*Design Proof Test successful and found no rupture or satisfactory.*

*As per 17/1/2014*

*24.02.14*

# CERTIFICATIONS



ISO 9001

**TUVNORD**

## Certificate

Management system as per  
**ISO 9001:2015**

The Certification Body TUV NORD CERT GmbH hereby confirms as a result of the audit, assessment and certification decision according to ISO/IEC 17021:2015, that the organization

**M S FITTINGS MANUFACTURING COMPANY PRIVATE LIMITED**  
Head Office: 17 Weston Street, Kolkata - 700 013, West Bengal, India

operates a management system in accordance with the requirements of ISO 9001:2015 and will be assessed for conformity within the 3 year term of validity of the certificate.

**Manufacture of Seamless, Forged and Welded Fittings & Flanges in Carbon Steel, Stainless Steel, Alloy Steel and Exotic Grade Materials.**

Certificate Registration No. **44 100 24939983** Valid from **18.07.2024**  
Audit Report No. **25-1904-02024** Valid until **18.07.2027**  
Initial certification **21.06.2024**  
Certified by auditor **CS since 18.07.2018**

Mumbai, 18.07.2024  
Certification Body of TUV NORD CERT GmbH

TUV NORD CERT GmbH  
Am TÜV 1, 43097, Essen  
www.tuv-nord.com

TUV INDIA PVT. LTD.  
801, Parkside Plaza, L.S.S. Marg,  
Shalimar (W) Mumbai - 400 086,  
India  
www.tuv-india.com

**TUVNORDGROUP**

ISO 45001

**TUV NORD**

## CERTIFICATE

Management system as per  
**ISO 45001 : 2018**

The Certification Body TUV NORD CERT GmbH hereby confirms as a result of the audit, assessment and certification decision according to ISO/IEC 17021:2015, that the organization

**M S FITTINGS MANUFACTURING CO. PVT. LTD.**  
Work - Rampur, Budge Budge Trunk Road, Kolkata - 700 141, West Bengal, India

operates a management system in accordance with the requirements of ISO 45001 : 2018 and will be assessed for conformity within the 3 year term of validity of the certificate.

**Manufacturing of Pipe Fittings & Flanges.**

Certificate Registration No. **44 100 2339883** Valid from **08.08.2023**  
Audit Report No. **25-17201-00023** Valid until **08.08.2026**  
Initial certification **08.08.2023**

Mumbai, 08.08.2023  
Certification Body of TUV NORD CERT GmbH

TUV NORD CERT GmbH  
Am TÜV 1  
43097 Essen  
www.tuv-nord.com

TUV India Pvt. Ltd. (P) Rampur/Trunk - L.S.S. Marg, Ghatampur (W) Mumbai - 400 086, India  
www.tuv-india.com

PED

**DNV-GL**

## MATERIAL MANUFACTURE STATEMENT

The Manufacturer hereby certifies that the material is manufactured in accordance with the requirements of the Indian Boiler Regulation, 1950 (IBR) for the purpose of use in the manufacture of boiler components.

**M.S. Fittings Manufacturing Co. Pvt. Ltd.**  
Head Office: 17, Weston Street, Kolkata - 700 013, India  
Factory: Rampur, Budge Budge Trunk Road, Kolkata - 700 141, India

**Steel Forging**

The material is used in the manufacture of boiler components which are used in the manufacture of boiler components. The material is used in the manufacture of boiler components which are used in the manufacture of boiler components.

For further details are given in the following pages

Mumbai, 18.07.2024  
Certification Body of TUV NORD CERT GmbH

IBR

**Government of West Bengal**  
Directorate Of Boilers  
8th floor, N.S. Building, I.K.S. Road, Kolkata-700011

No: WB/MANUFACTURER-FINAL/2020/12 Date: 09-11-2020

**Certificate of Renewal for Component Manufacturer.**

This is to certify that M.S. Fittings Manufacturing Co. Pvt. Ltd. (office address) Kolkata, Kolkata, 17, Weston Street, 700013 (Work address) South 24 Parganas, Alipore, Rampur, Budge Budge Trunk Road, 700141 is hereby granted renewal under regulation 4(b) of the Indian Boiler Regulation, 1950 Component Manufacturer in the State of West Bengal.

Classification of Manufacturer (Boiler Component and can manufacture parts like Elbow, Reducer, Bend, Tee, Cross, Cap, Swing Nipple, Flange, Coupling, Union, Plug, Bushing, Nipple, Weldolet, Socket, Threadolet, Elbowolet Material Specification ASTM A105, A106, A182, CR5E, P9, F11, F22, A334 GR.9W, WPS, WPS, WP11, WP22, A516 GR.60, CR5E and Stainless Steel Material.

Remarks :

Competent person Director of Boilers, Govt. of West Bengal.

EIL

**ENGINEERS INDIA LIMITED**  
Procurement Development Department

Ref: 4994/PDD/IR/23-24/MS/7 Date: 02<sup>nd</sup> Aug, 2023

M/S M.S. FITTINGS MFG. CO PVT LTD  
17, WESTON STREET KOLKATA,  
WEST BENGAL, 700013

**Subject: Revalidation of Enlistment with EIL**

Dear Sirs,  
We refer to your application on subject matter and are pleased to inform that your enlistment with EIL has been revalidated for the term as described below:

| Item Description            | Type        | Size      | Thickness/Welding                                      | Material |
|-----------------------------|-------------|-----------|--|----------|
| Flange                      | Forge       | 0.5-8"    | 150-600  | CS       |
|                             |             | 0.5-4"    | 150-300  | AS       |
| Fitting Block               | Forge       | 0.5-10.5" | 2000-9000  | CS/SS    |
|                             |             | 0.5-4"    | 3000-40000   | AS       |
| Orlets                      | Weldolet    | 0.5-4"    | Proof Test conducted on 4"x1" Sch 80 and 3" 40" Sch 40 | CS/SS    |
|                             |             | 0.5-2"    | Proof Test conducted on 4"x1" Sch 80, 3000 Class       | CS/SS    |
|                             |             | 2-6"      | Upto 21.95 mm, Upto Sch XKS                            | CS/SS    |
|                             |             | 8"        | Upto 23.03 mm, Upto Sch 160                            | CS/SS    |
|                             |             | 10"       | Upto 23.03 mm, Upto Sch 160                            | CS/SS    |
|                             |             | 12"       | Upto 23.03 mm, Upto Sch 160                            | CS/SS    |
|                             |             | 14"       | Upto 23.03 mm, Upto Sch 160                            | CS/SS    |
|                             |             | 16"       | Upto 23.03 mm, Upto Sch 160                            | CS/SS    |
|                             |             | 18"       | Upto 23.03 mm, Upto Sch 160                            | CS/SS    |
|                             |             | 20"       | Upto 23.03 mm, Upto Sch 160                            | CS/SS    |
| Fittings from Seamless Pipe | Return Bend | 2"        | Upto 11.0 mm, Upto Sch XKS                             | CS       |
|                             |             | 3"        | Upto 11.3 mm, Upto Sch 160                             | CS       |
|                             |             | 4"        | Upto 11.3 mm, Upto Sch 160                             | CS       |
|                             |             | 6"        | Upto 11.3 mm, Upto Sch 160                             | CS       |
|                             |             | 8"        | Upto 11.3 mm, Upto Sch 160                             | CS       |
|                             |             | 10"       | Upto 11.3 mm, Upto Sch 160                             | CS       |
|                             |             | 12"       | Upto 11.3 mm, Upto Sch 160                             | CS       |
|                             |             | 14"       | Upto 11.3 mm, Upto Sch 160                             | CS       |
|                             |             | 16"       | Upto 11.3 mm, Upto Sch 160                             | CS       |
|                             |             | 18"       | Upto 11.3 mm, Upto Sch 160                             | CS       |
| Fittings to IS 1239         | Nipple      | 0.5-6"    | Upto 5.8 mm  | IS 1239  |
|                             |             | 0.5-2"    | Upto 5.8 mm, Upto Sch XKS                              | IS 1239  |
|                             |             | 2.5-3"    | Upto 11.3 mm, Upto Sch 160                             | CS       |
|                             |             | 4-8"      | Upto 22.23 mm, Upto Sch 160                            | CS       |
| Fittings Pipe Cap           | Cap         | 0.5-2"    | Upto 5.8 mm, Upto Sch XKS                              | IS 1239  |
|                             |             | 2.5-3"    | Upto 11.3 mm, Upto Sch 160                             | CS       |
|                             |             | 4-8"      | Upto 22.23 mm, Upto Sch 160                            | CS       |
|                             |             | 10-20"    | Upto 44.45 mm, Upto Sch 160                            | CS       |

AS - GR. 11.32.5.9  
SS - GR. 304L/316L/316L/321L/304/317

Sheet 1 of 2

Engineers India Limited  
Procurement Development Department

For more information contact us at  
Phone: +91-11-26782211 (EPABOX)  
Fax: +91-11-26782211  
Email: info@engineersindia.com  
Website: www.engineersindia.com

# CLIENTELE





# CONTACT DETAILS



## Phone

+91-033-2236-2902/03



## Email

headoffice@msfittings.com  
exports@msfittings.com



## Website

[www.msfittings.com](http://www.msfittings.com)



## Head Office

17 Weston Street,  
Kolkata - 700013,  
West Bengal,  
India



## Works

Rampur, Budge Budge Trunk Road,  
Kolkata-700141,  
West Bengal,  
India

